



### City Park Guide

- |                              |                                      |
|------------------------------|--------------------------------------|
| 1 Bruegger Memorial Park     | 7 Heritage Square (under the bridge) |
| 2 Edward Maloné Park         | 8 Dennis Pfeilsticker Memorial Park  |
| 3 Izaak Walton Park          | 9 Cannon Park                        |
| 4 Beach Park at Hungry Point | 10 Schmidt Park                      |
| 5 Jaycee Park                | 11 Heroes Park                       |

### Area Business Directory

#### Wabasha

- 1 AmericInn Lodge & Suites & Riverfront Carriage Rides
- 2 Anderson Gardens
- 3 Anderson House Boutique, Hotel, & Eagles on the River/America's Lofts
- 4 Attic Boutique
- 5 Big River Resort
- 6 Bird Brain Art & Antiques & The Chocolate Escape
- 7 Blossom Shop
- ▲ Chamber/CVB Information
- 8 Coffee Mill Inn & Suites
- 9 Coffee Mill Ski & Snowboard Area
- 10 Common Closet
- 11 Eagles Nest Coffee House
- 12 Fresh Wok
- 13 Grandpa's Barn
- 14 Hill's Hardware Hank
- 15 Weichert Realtors
- 16 Kruger Hardwood Forest & State Park
- 17 Kwik Trip
- 18 Los Portales Mexican Restaurant
- 19 National Eagle Center
- 20 Olde Triangle Pub
- 21 Paul Busch Auto
- 22 Pioneer Club
- 23 Pioneer Campsite Resort
- 24 Plaid Productions
- 25 Proud's Bridgeside Antiques
- 26 River Crossings BP
- 27 Saint Elizabeth's Medical Center
- 28 Scheels' Supervalue
- 29 Schoen Family Dentistry
- 31 Slippery's Bar & Restaurant
- 32 Stacy's Kitchen
- 33 Turning Waters Bed, Breakfast & Brewery
- 34 Ultimate Health Massage, LLC

#### Wabasha (cont.)

- 35 Wabasha Dentistry
- 36 Wabasha Discount Mart
- 37 Wabasha Public Library
- 38 Wabasha Warehouse Liquors
- 39 The Woodshop Boutique

#### Kellogg

- 40 Kwik Trip
- 41 LARK Toys
- 42 SVJ Creative Designs

#### Surrounding Communities

##### Alma

Castle Rock Museum

##### Lake City

Camp Lacopolis  
Lake Pepin Paddleboat, Inc.  
The Willows

##### Nelson

J&J BBQ and Catering  
Grandpa's Saloon  
Hot Rod Liquor  
Laura's Treasures

##### Pepin

The Breakwater / Sail Pepin

##### Plainview

The Woods Fine Amish Furniture

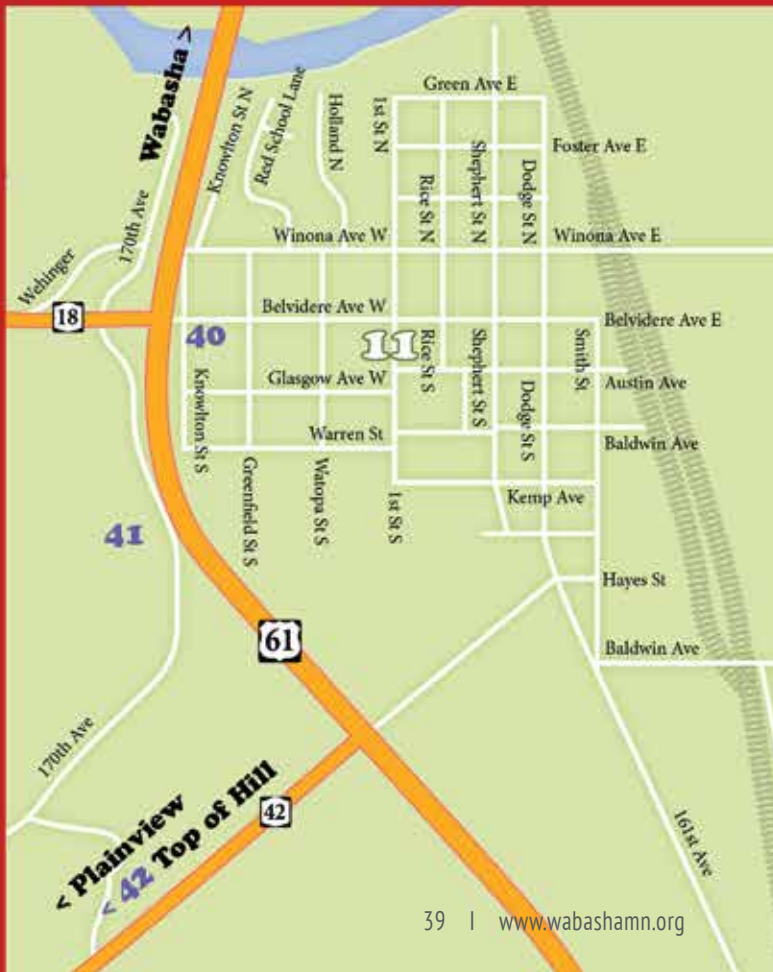
##### Reads Landing

Reads Landing Brewing Company  
The River Nest B&B

# Downtown Wabasha



# Kellogg, MN



## Map Key

- Historic District
- Schools
- ATM
  - First State Bank
  - Kwik Trip
  - River Crossing BP
  - Riverboat Lanes
  - SuperValu
- Hospital/Clinic
- Public Restroom
  - Chamber/CVB Office
  - City Hall
  - City Library - City Parks
  - National Eagle Center
  - Riverboat Lanes
- City Hall
- Criminal Justice Center
- County Offices
- Tourist Information Center
- Bike Routes
  - 1 Mile
  - 3 Mile
  - 5 Mile
- Boat Launch

# Area & State Parks Map

**Carley State Park**  
 Altura, MN  
 507-932-3007  
 Birding, fishing, hunting, camping, picnic areas and hiking or cross-country ski trails.

**Frontenac State Park**  
 Frontenac, MN  
 651-345-3401  
 2300-acre park on the bluffs overlooking Lake Pepin with camping, hunting, picnicking, trails, birding, cross-country skiing, snowmobiling, snowshoeing and a winter sliding hill.

**John A Latsch State Park**  
 Winona, MN  
 507-932-3007  
 350-acre park offers camping, hunting, picnic areas, a half-mile trail leading to the top of Mt. Charity and three overlooks 500 feet above the Mississippi River.

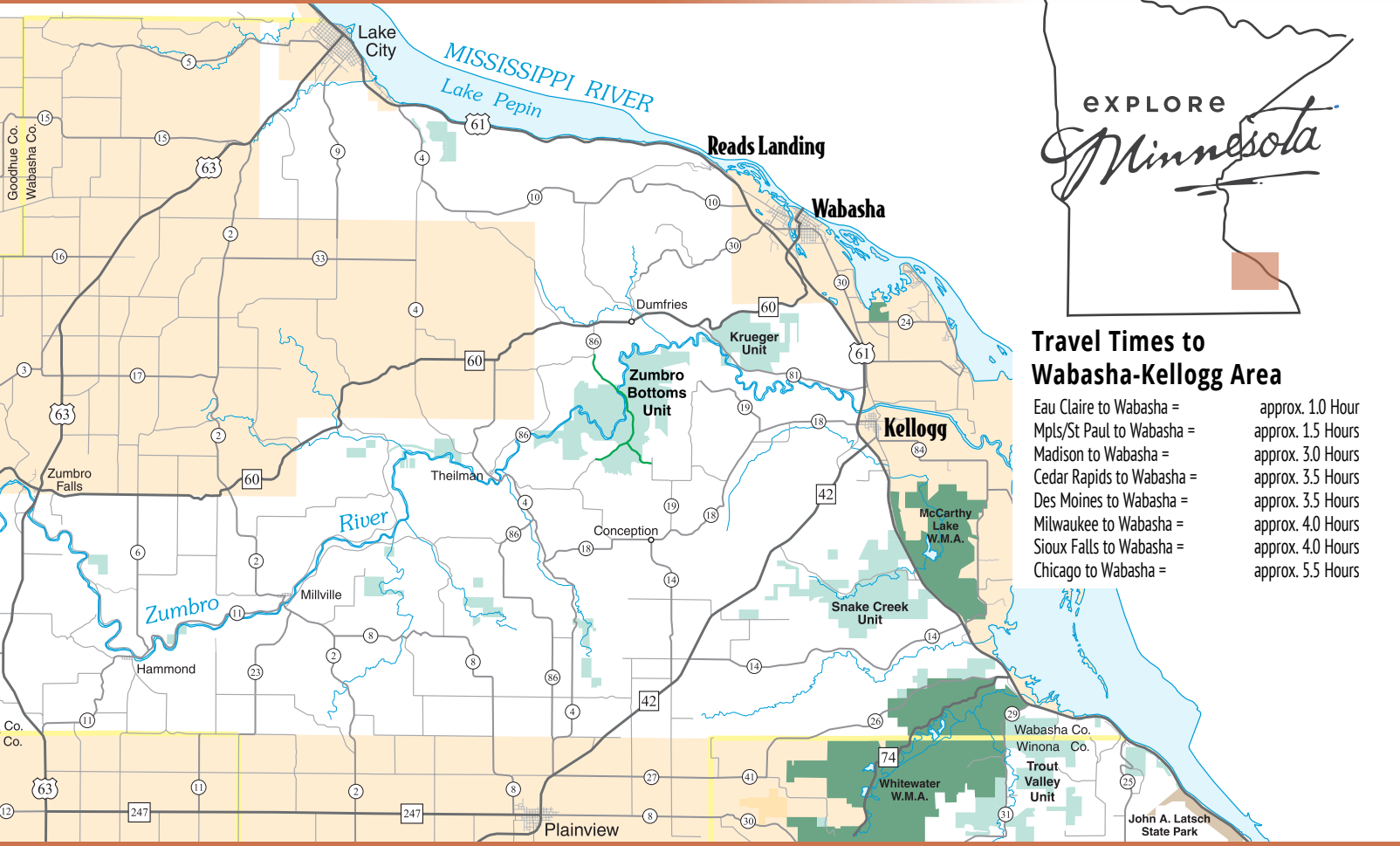
**Kruger Campground & DUA**  
 Wabasha, MN  
 651-345-3401  
 Offers wheelchair accessible trail, fishing, hunting, hiking trails, canoe access, picnic area with shelters, nature trails and campsites.

**Snake Creek Mgmt Unit**  
 Kellogg, MN  
 507-285-7176  
 Two trail systems varying in length and difficulty available for all trail users except 4-wheel-drive vehicles. Hunting and on-site and off-site campgrounds available.

**Whitewater State Park**  
 Altura, MN  
 507-932-3007  
 camping, hunting, cabin rental, swimming beach, hiking trail, cross-country ski trail, visitor center and rentals.

**Zumbro Bottoms Horse Campgrounds**  
 Kellogg, MN  
 651-345-3401  
 Three campgrounds, West, Central, and North. All three can be used for picnicking, hiking trails, hunting, canoeing and horseback riding.

[www.dnr.state.mn.us/state\\_parks](http://www.dnr.state.mn.us/state_parks)



## Travel Times to Wabasha-Kellogg Area

Eau Claire to Wabasha =	approx. 1.0 Hour
Mpls/St Paul to Wabasha =	approx. 1.5 Hours
Madison to Wabasha =	approx. 3.0 Hours
Cedar Rapids to Wabasha =	approx. 3.5 Hours
Des Moines to Wabasha =	approx. 3.5 Hours
Milwaukee to Wabasha =	approx. 4.0 Hours
Sioux Falls to Wabasha =	approx. 4.0 Hours
Chicago to Wabasha =	approx. 5.5 Hours

## Wabasha-Kellogg Chamber & CVB



137 West Main Street, Wabasha, MN 55981

[www.wabashamn.org](http://www.wabashamn.org) | 800-565-4158

PRSR STD  
 U.S. POSTAGE PAID  
 WABASHA, MN  
 PERMIT NO. 17